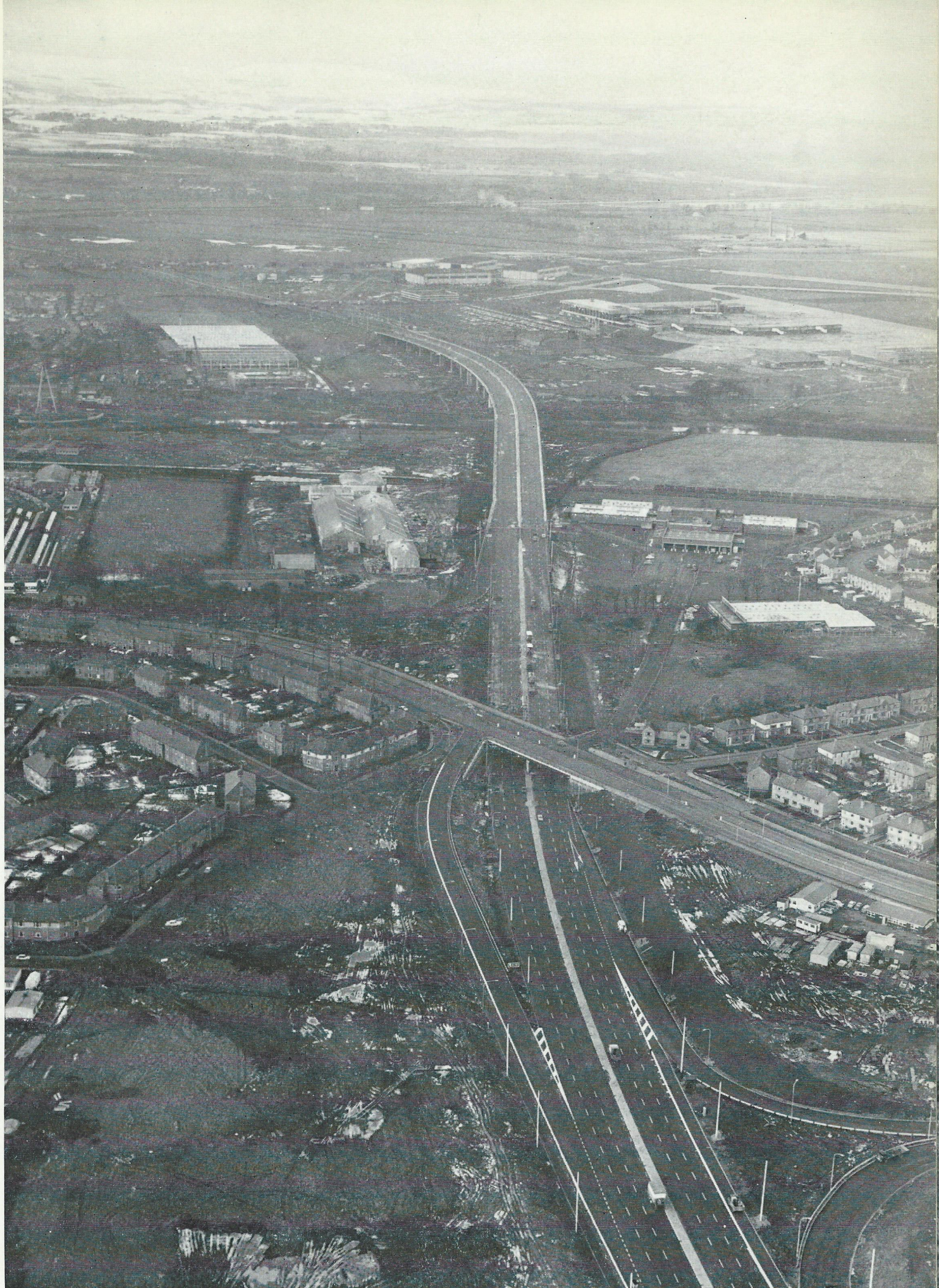




GLASGOW
MOTORWAY
ARCHIVE

M8 RENFREW BYPASS



The motorway passes between Paisley and Renfrew and continues west toward Glasgow Airport (*top right*).



GLASGOW
MOTORWAY
ARCHIVE

Cover—White Cart Viaduct under construction.



Viewed from the Airport end the curved viaduct nears completion.

**WHITE
CART
VIADUCT**

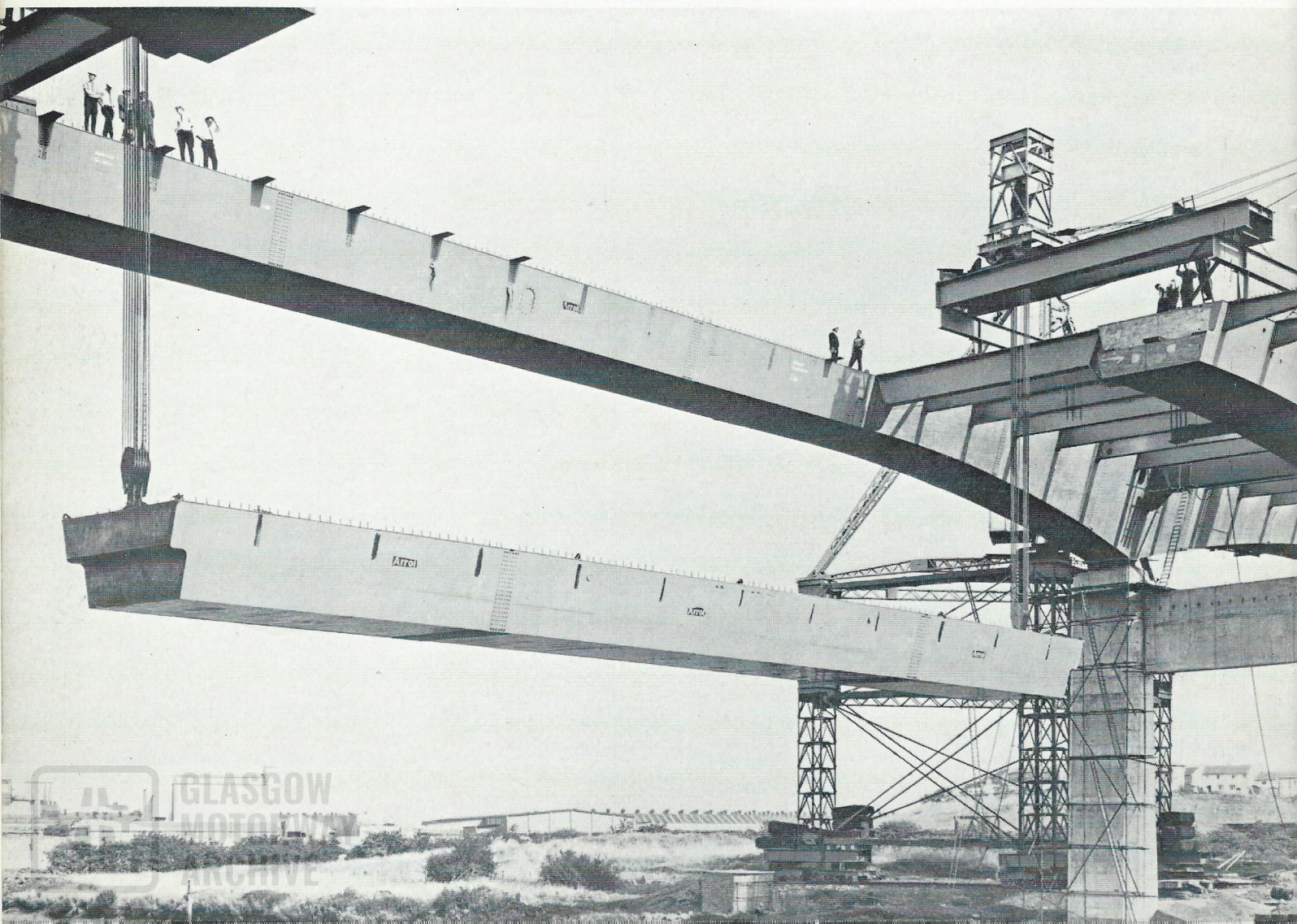
The slender octagonal rocker columns supporting the six lane motorway.





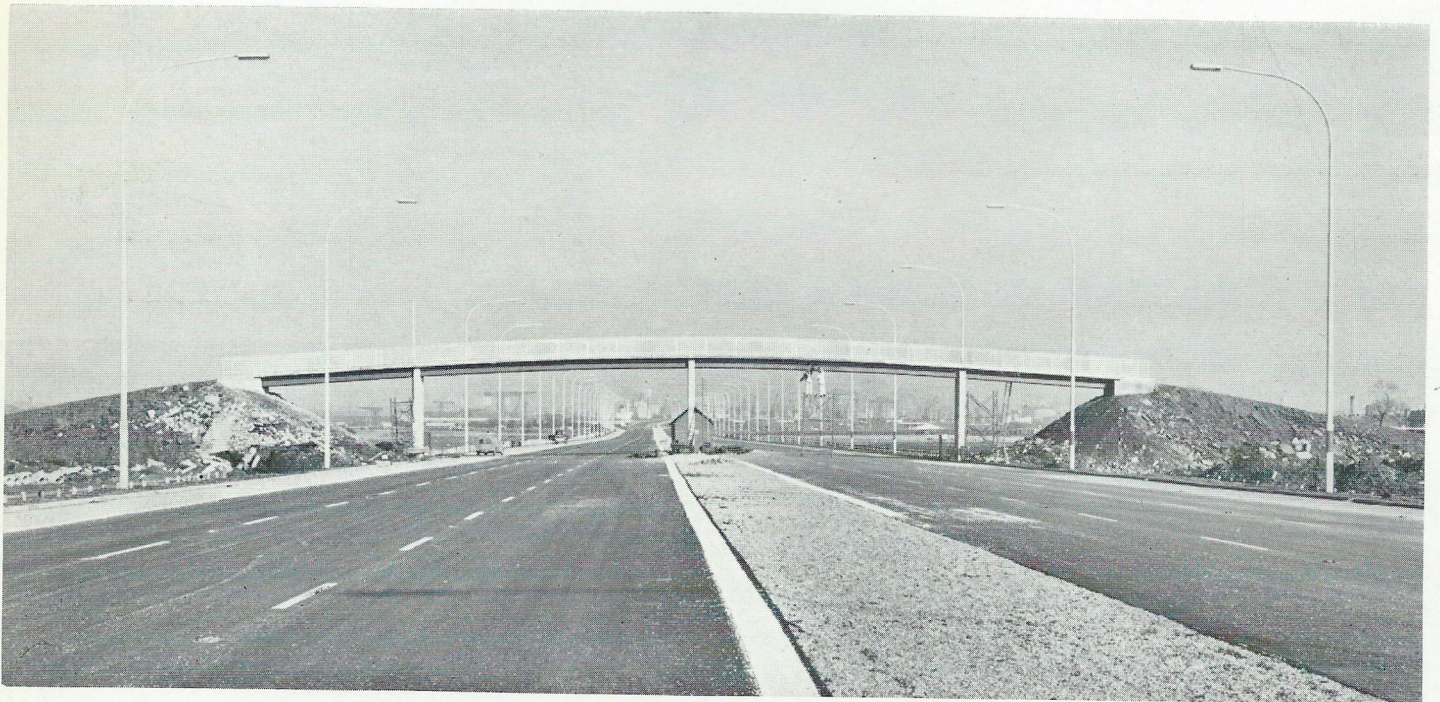
Erection of main span steelwork in progress looking upriver to Paisley.

The final link in the motorway is hoisted into position.





St. James Interchange.



Footbridge linking
Renfrew and Hillington.



Bridge carrying
Paisley-Renfrew road.



PARTICULARS OF MOTORWAY

Length of Motorway	-	-	-	-	-	-	-	-	6.5 miles
Length of Side Roads and Slip Roads	-	-	-	-	-	-	-	-	4.2 miles
Volume of Excavation	-	-	-	-	-	-	-	-	303,000 cu. yds.
Volume of Imported Filling	-	-	-	-	-	-	-	-	896,000 cu. yds.
Area of Carriageway Surfaces	-	-	-	-	-	-	-	-	404,000 sq. yds.
Number of Bridges	-	-	-	-	-	-	-	-	14
Volume of Concrete	-	-	-	-	-	-	-	-	16,000 cu. yds.
Weight of Steel	-	-	-	-	-	-	-	-	1,500 tons

Viaduct :—

Length	-	-	-	-	-	-	-	-	2,700 feet
Concrete in Piers	-	-	-	-	-	-	-	-	1,710 cu. yds.
Structural Steelwork	-	-	-	-	-	-	-	-	5,000 tons
Concrete in Deck	-	-	-	-	-	-	-	-	7,500 cu. yds.
H. Section Steel Piles	-	-	-	-	-	-	-	-	2,410 tons (60,000 lin. ft.)

Consulting Engineers :-

CROUCH & HOGG
GLASGOW

Contractors :-

HILLINGTON TO BARNSFORD ROAD	-	-	-	-	-	-	-	-	PETER LIND & CO. LTD., LONDON & CANNOCK
BARNSFORD ROAD - ST. JAMES - GREENOCK ROAD	-	-	-	-	-	-	-	-	MARPLES RIDGWAY, LTD., LONDON
WHITE CART VIADUCT - SUPERSTRUCTURE	-	-	-	-	-	-	-	-	SIR WILLIAM ARROL & CO. LTD., GLASGOW
WHITE CART VIADUCT - FOUNDATIONS	-	-	-	-	-	-	-	-	MURDOCH MACKENZIE, LTD., MOTHERWELL
P. F. ASH EMBANKMENT AT ABBOTSINCH	-	-	-	-	-	-	-	-	JOHN DRYSDALE & CO. LTD., GLASGOW
ROAD AND SIGN LIGHTING	-	-	-	-	-	-	-	-	JAMES KILPATRICK & SONS LTD., PAISLEY
TRAFFIC SIGNS	-	-	-	-	-	-	-	-	WINSSER SIGNS LTD., CAMBERLEY

